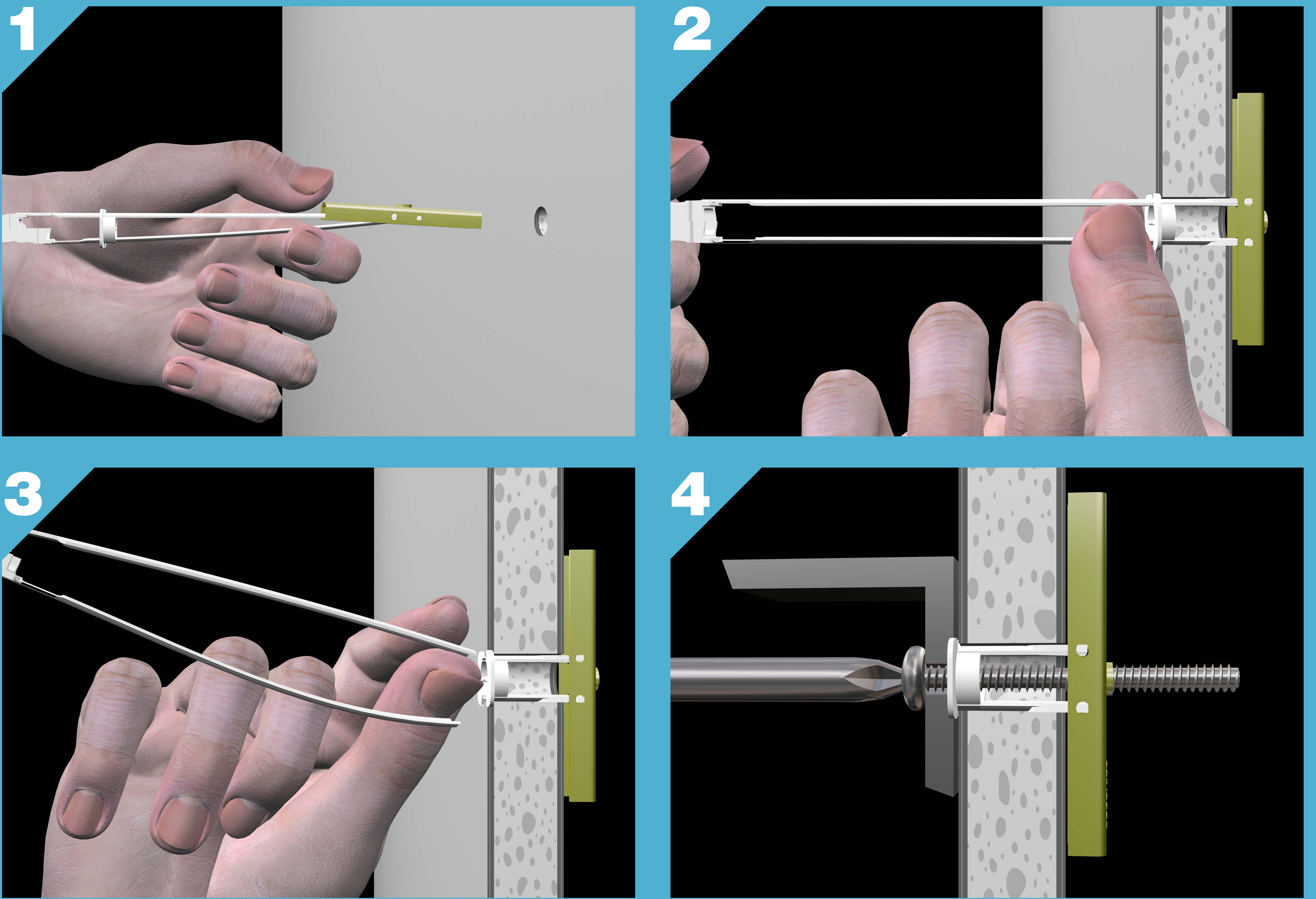


TOGGLER®

SNAPTOGGLE®

Heavy-Duty Cavity Wall Anchor



Anchor (bolt dia.)	Tested in	Ultimate tensile pull (kg)
BM5 (M5)	12.5mm plasterboard	108
BM5 (M5)	hollow concrete block	363
BM6 (M6)	12.5mm plasterboard	120
BM6 (M6)	hollow concrete block	490

- **New, stronger straps do not break prematurely – insulation in wall will not interfere with installation**
- **New golden plating is 7x more corrosion-resistant**
- **Works in materials 9.5mm to 90mm thick**
- **Also available in stainless steel & with Imperial threads**